

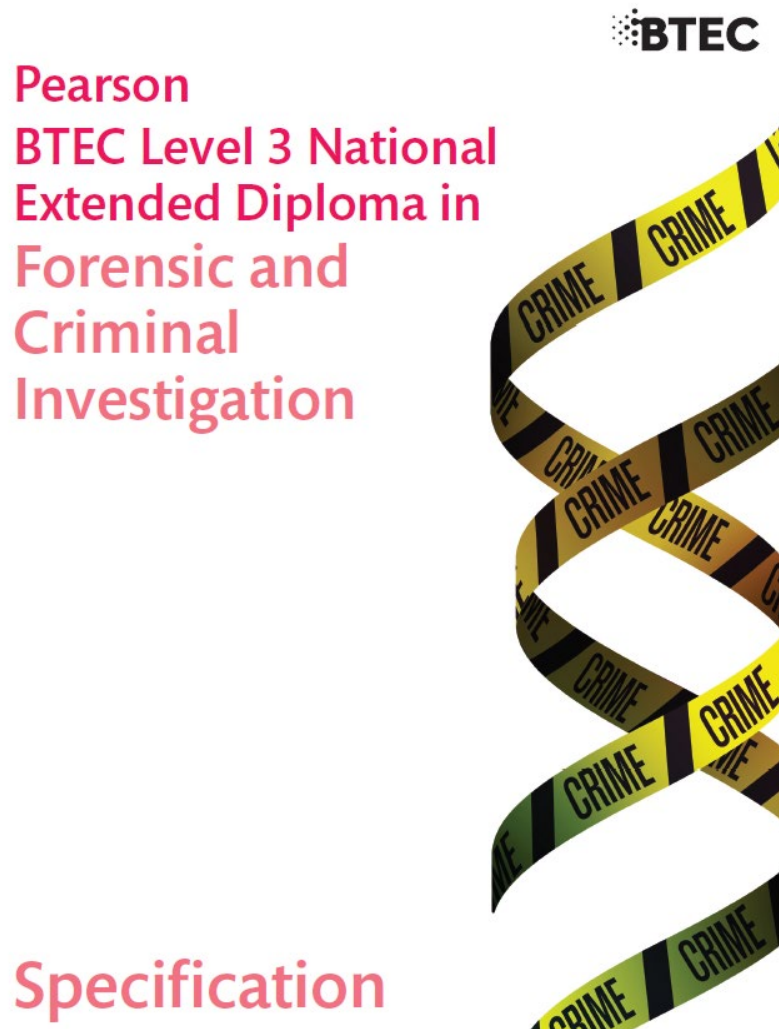
Congratulations for achieving a place here at Bury College and welcome to Level 3 Forensics!

You've probably been wondering how studying at college will compare to your previous studies so we have put together a quick guide and some activities to help you get ready for starting in September.



Pearson BTEC Level 3 National Extended Diploma in Forensics and Criminal Investigation

Serving the community through education and training



Serving the community through education and training

Preparation for college



Pens

Pencils

Eraser and Sharpener

Ruler

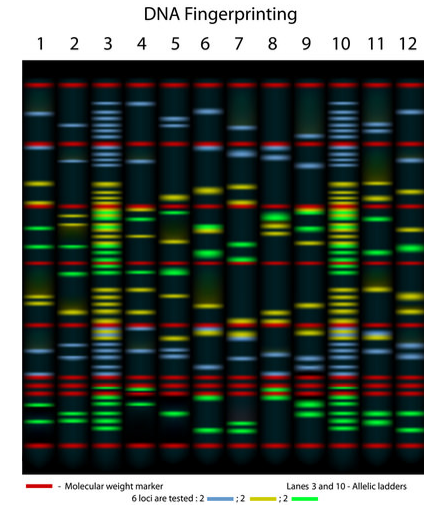
Lever Arch Folder

Calculator

Highlighters

Notepad

What equipment do I need?



Year 1

Learn the Science behind Forensics



Topics studied:

- ✓ Principles & Applications of Science
- ✓ Practical Scientific Procedures & Techniques
- ✓ Scientific Investigation Skills
- ✓ Forensic Investigation Procedure in Practice
- ✓ Forensic Traffic Collision Investigation
- ✓ Microbiology & Microbiological Techniques
- ✓ Physiology of the Human Body



Year 2



Topics studied:

- ✓ Applications of Criminology
- ✓ Criminal Investigation Procedures in Practice
- ✓ Applications of Criminal & Forensic Psychology

Along with (these are subject to change)

- ✓ Practical Chemical Analysis
- ✓ Forensic Fire Investigation
- ✓ Forensic Genetics
- ✓ Environmental Forensics





Being a Forensics Student!

Be Ready To Learn

Equipment - Black pen, pencil, scientific calculator, notepad and file.

College Provision – College will provide you with an email address, access to Office 365 and access to the VLE (Virtual Learning Environment) where all your important documents can be access online.

Positive Futures

- **Commitment** – 95% minimum attendance. Meeting coursework/homework deadlines.
- **Resilience** – building resilience through continual assessment and feedback.
- **Collaboration** – working together in a team with other students and your teachers.
- **Confidence** – making new friends and improving interpersonal skills.