



An **alliteration** is a sequence of words that start with the same letter (or sound) e.g. Arthur the **A**mar**ing A**lbatross



Hyperbole is deliberate, sometimes outrageous exaggeration for effect e.g. "I'm starving!" (when you're merely hungry).



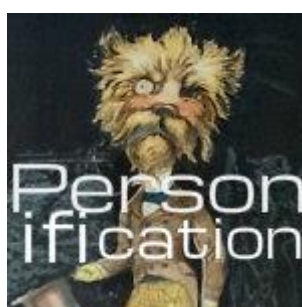
A **Metaphor** is a figure of speech in which a word or phrase is applied to an object or action to which it is not literally application e.g. "He is a pig!".



Onomatopoeia is a word that sounds like what it describes e.g. *Crash, bang, thump, boom, bang, hiss, plop, whistle, rustle.*



An **oxymoron** is two words which are opposites, put together e.g. 'organised mess', 'alone in a crowd', 'accidentally on purpose', 'deafening silence'.



Personification is the attribution of human qualities or emotions to something non-human e.g: '*The wind whistled through the trees.*'



Repetition is used to create emphasis, show connections, how ideas transform, develop, build. It can be done at the level of sounds (letters), words or ideas - in a range of patterns.

Simile

A **simile** is a figure of speech involving the comparison of two things using 'as' or 'like' e.g. 'He was as quiet as a mouse'.



Figurative Language is a description that appeals to the five senses in a noticeable way. The air was *warm, thick and sluggish*.

zoomorphism

Zoomorphism is a technique where animal attributes are imposed on non-animal objects.



Anthropomorphism is the attribution of human characteristics to a deity, animal or object.

DISSONANCE

Dissonance is the repetition of consonant sounds within and at the end of words e.g. '*I must confess that in my quest I felt depressed and restless*'.