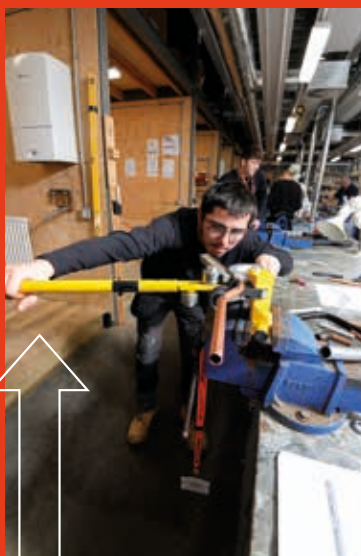
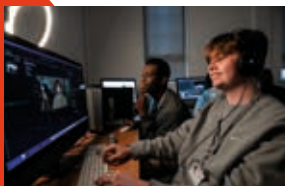


# WELCOME TO T LEVELS AT BURY COLLEGE



**T-LEVELS**  
THE NEXT LEVEL QUALIFICATION



# T LEVELS: THE FACTS

**T Levels are qualifications that combine classroom learning with an industry placement and are designed for 16-18 year olds.**

They are two-year courses and an exciting alternative full Level 3 qualification. These high-quality courses will allow you to develop hands-on practical skills to progress onto university or straight into employment.



T Levels are equivalent to three A Levels and carry UCAS points



Combine classroom learning (80%) with on-the-job work experience (20%)



Complete a 45-day industry placement and have the opportunity to experience a real workplace setting



Courses have been developed in collaboration with employers and businesses to make sure you develop the practical skills needed for your future



# DISCOVER OUR WIDE RANGE OF T LEVEL COURSES STARTING IN SEPTEMBER 2024

- **Accounting**
  - > Specialism in Assistant Accounting
- **Building Services**
  - > Specialism in Electrical Installation
  - > Specialism in Plumbing and Heating Engineering
- **Digital Production, Design and Development**
  - > Specialism in Digital Production, Design and Development
- **Digital Support Services**
  - > Specialism in Digital Infrastructure
- **Education and Early Years**
  - > Specialism in Assisting Teaching
  - > Specialism in Early Years Educator
- **Engineering and Manufacturing, Design and Development**
  - > Specialism in Mechanical Engineering
  - > Specialism in Electrical and Electronic Engineering
- **Health**
  - > Specialism in Supporting the Adult Nursing Team
  - > Specialism in Supporting Therapy Teams
- **Management and Administration**
  - > Specialism in Team Leadership/Management
- **Media, Broadcast and Production**
  - > Specialism in Content Creation and Production
- **Science**
  - > Specialism in Technical: Laboratory Sciences

**MORE COURSES IN  
DEVELOPMENT FOR  
SEPTEMBER 2025!**





## Achieving a T Level qualification will allow you to progress onto university, into employment or onto a higher-level apprenticeship.

Please find below a table which shows how many UCAS points each T Level is worth.

UCAS Points	T Level Overall Grade	Equivalent to 3 A Levels at:
168	Distinction*	A*
144	Distinction	A
120	Merit	B
96	Pass (C or above on the core)	C
72	Pass (D or E on the core)	D

We are incredibly proud of all our students who year-on-year achieve exceptional results and go on to progress their careers.

Upon successful completion of their T Level courses in 2023, students progressed onto university, secured employment or went onto a higher apprenticeship.



### Universities included:

- Bury College University Centre
- Coventry University
- Edge Hill University
- Leeds Beckett University
- Liverpool John Moores University
- University of Central Lancashire
- University of Salford
- University of Wolverhampton



### Courses included:

- Adult Nursing
- Paramedic Science
- Primary Education with QTS
- Psychology
- Working with Children and Families

Edie Watson



*"I really enjoyed my time at Bury College and made some amazing friends. I also had lots of help from my tutors throughout my time here which supported me to secure my place at university."*

**Course:** T Level Education and Early Years  
**Progression:** Edge Hill University to study Primary Education QTS  
**Former School:** Bury CE High School



Grace Van Der Kamp



*"My T Level course has allowed me to become more confident in my own ability. The new facilities in the Health and Digital Centre have also given me a great experience of working in a realistic environment."*

**Course:** T Level Health: Supporting the Adult Nursing Team  
**Progression:** University of Central Lancashire to study Paramedic Science  
**Former School:** St Monica's RC High School

# VALUABLE INDUSTRY PLACEMENTS

**Bury College works in partnership with local and national employers to support the delivery of T Level qualifications.**

The businesses we work in collaboration with provide students with a 45-day industry placement which is a fantastic opportunity for you to experience a real workplace setting.

Below highlights just a few of the organisations we are proud to work with.



# MEET OUR T LEVEL STUDENTS WHO ARE GETTING AHEAD IN THEIR CAREERS ON THEIR INDUSTRY PLACEMENTS

Holly Clarke



*"I am absolutely loving every minute of my T Level course. My placement at a primary school is a really valuable experience to help me achieve my goal of becoming a teacher."*

**Course:** T Level Education and Early Years  
**Placement:** Holy Trinity C of E Primary School  
**Former School:** Middleton Technology School



Megan Jones



*"I am really enjoying my placement as it is allowing me to experience one-to-one interactions with residents and is preparing me for my future career as a paramedic."*

**Course:** T Level Health: Supporting the Adult Nursing Team  
**Placement:** Local care home Nazareth House  
**Former School:** St Anne's Church of England Academy



Layton Burns



*"For anyone that is considering doing a T Level I would say go for it! It will allow you to experience what it is like working in the real world."*

**Course:** T Level Management and Administration  
**Placement:** Bury Business Improvement District  
**Former School:** Little Lever School



Jack Hinchcliffe



*"My T Level course has allowed me to undertake a placement and I have gained hands-on experience working on a shop floor and learning from industry experts."*

**Course:** T Level Engineering Manufacturing, Design and Development  
**Placement:** Crossfield Excalibur  
**Former School:** Woodhey High School





# STATE-OF-THE-ART FACILITIES

**Bury College is a growing campus, with a number of centres housing a range of specialist facilities.**

The campus continues to evolve as significant investment is made, ensuring that you have access to the latest equipment and technologies to help you progress in your career and further studies.

Recent developments include our £9+ million Health and Digital Centre which opened in January 2023 and includes the following facilities:

- State-of-the-art laboratory
- Simulated hospital ward
- Replicated domestic home
- Immersive digital environment
- Esports suite
- Advanced IT facilities



## WHAT OUR STUDENTS SAY

Benjamin Sublon Perino



*"My T Level course is helping to prepare me for my career goal working as an IT engineer. I have really enjoyed completing an industry placement."*

**Course:** T Level Digital Support Services  
**Former School:** St Gabriel's RC High School

Naomi Nwabunike



*"I am really enjoying my course. My leadership, communication and planning skills have really improved which will help me progress in my career."*

**Course:** T Level Management and Administration  
**Former School:** St Cuthbert's RC High School





## INFORMATION FOR PARENTS AND CARERS

**T Levels have been developed to provide young people with the technical skills and knowledge that employers look for.**

By combining theoretical knowledge with a substantial industry placement, T Levels give young people the qualifications and experience needed to progress onto university, into employment or onto a higher apprenticeship.

Employers have helped to develop T Level programmes to ensure that students are gaining the skills and knowledge needed for industry. Hear from one of the employers that we work with as to why they would recommend a T Level.

*“The T Level students we have had with us have been fantastic. Their confidence has grown and they have had great exposure to the industry they want to progress their careers in. This world of work experience is so valuable to their futures and puts them ahead of their peers.”*

**Steve Davies**

Managing Director - Crossfield Excalibur

Steve Davies with T Level Engineering students  
David Gbadebo (left) and Jack Hinchcliffe (centre)



Our helpful staff are here to offer further support and guidance. Please do not hesitate to get in touch with our team if you would like some careers advice or further information about T Levels.

Please call 0161 280 8200 or email [admissions@burycollege.ac.uk](mailto:admissions@burycollege.ac.uk)

For more information  
please scan here







# BE PART OF THE T LEVEL SUCCESS AT BURY COLLEGE

To find out  
more, please  
visit the website



# EXPERIENCE A T LEVEL THROUGH THE EYES OF OUR STUDENTS!



**SCAN HERE TO SEE HOW YOU  
CAN TAKE YOUR STUDIES TO  
THE NEXT LEVEL**



• BURY •  
COLLEGE

📍 Market Street • Bury • BL9 0BG  
☎ 0161 280 8280  
🌐 [www.burycollege.ac.uk](http://www.burycollege.ac.uk)  
✉ [information@burycollege.ac.uk](mailto:information@burycollege.ac.uk)

