



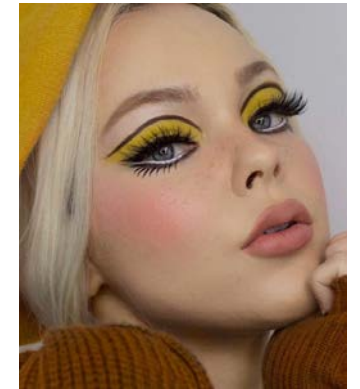
BE BURY COLLEGE BE READY

MEDIA MAKE-UP



We look forward to welcoming you to our department

- As part of your course you will learn lots of different skills and techniques to help you build an exciting career in the industry.
- This presentation will give you a good idea of some of the topics you can expect to learn whilst studying with us here at Bury College.
- You will find practical activities, useful YouTube clips, industry links to follow on Instagram and Facebook, all with the aim to get you ready for joining us here in September!



Contents Page

Pages 4 -6 - Make Up Task

Pages 7- 9 – Face Chart Task

Pages 10-12 – Special Effects Task

Page 13 – Finding Inspiration

Page 14 – Programmes to Watch



Make Up Task



For this task – you must collect items from around your house that are all of a similar colour.

Arrange these items on a flat surface and photograph from above – this is called a ‘flat lay’.

It’s a very modern interpretation of a mood board which is a process make-up artists use to find inspiration for their designs.

The objects in your flat lay can be **ANYTHING!** They do not have to be beauty related! For example – yellow banana, yellow socks, yellow flower, yellow shampoo bottle, yellow cushion, cheese, pasta etc.....



Here are some examples of what flat lays can look like – try to organise your objects neatly and photograph them from directly above.



Once you have completed your flat lay and taken a picture of it you must design and apply a make-up look based around it! Be as creative as you want and most importantly have fun!

Please share your work with us!
Send pictures of your flat lay and
make-up design to:
Melissa.Renzulli@burycollege.ac.uk





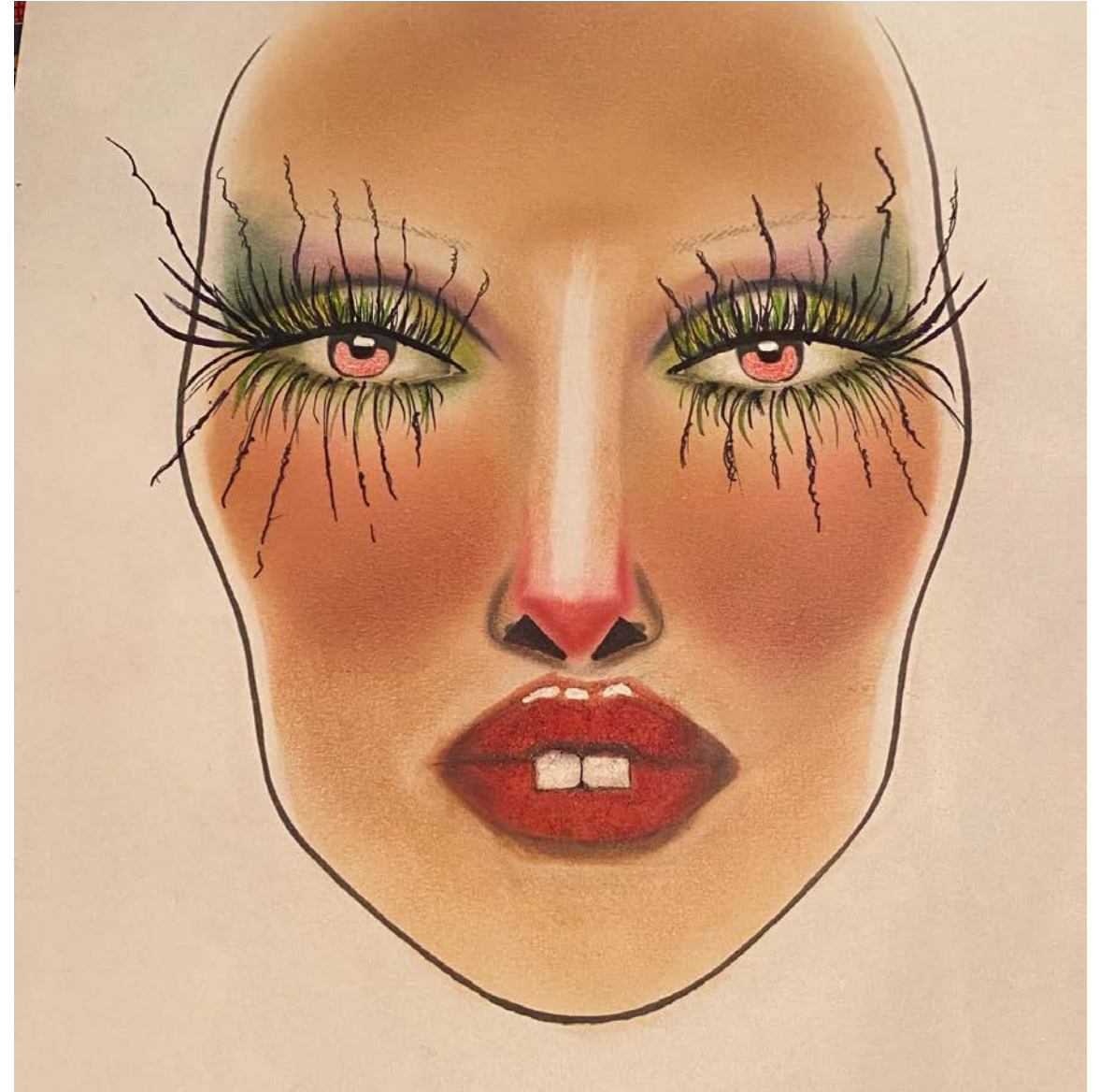
Face Charts

- Face charts are a vital skill that you will need for your journey studying Hair and Media Makeup, then into the industry.
- To gain the best result complete your face chart on textured paper.
- You can purchase face charts on textured paper or download your favourite face chart then print onto textured paper that fits through your printer.
- Our favourite face charts are from My Kitco.



Face Chart Task

- We challenge you to complete this face chart by following this James Molloy link.
- <https://www.instagram.com/p/B-4SE2EB6Tw/>
- The image here is our completed face chart, once you get creating, even if you do not have the exact shades, it will still come together and look great!
- Just click on the face chart to take you to the tutorial or click on the link above.
- Once you complete the face chart send it to nikki.yates@burycollege.ac.uk
- Next, post your face chart on social media and tag James Molloy in and wait to see if he replies.
- Go get creating!!





Special Effects Makeup

- Welcome to the SFX section of the Hair and Media Makeup course at Bury College:
- This is a really fun and creative part of the course!
- You will be learning how to apply horror, casualty and character makeup using the products and techniques from the film and television industry.
- The next slides demonstrate how you can try a technique from home, using everyday products.

Make Your Own Blood

There are two types of blood:

1. Runny
2. Congealed/Clotted

For your runny blood; Use 2 tablespoons of Golden Syrup, honey or Maple Syrup and 2-3 drops of Red food colouring. (add more drops of food colouring for darker blood)

To make your blood thick and clotted, you can add in a teaspoon of either;

- Chopped banana
- Cereal or porridge
- Torn up tissues, toilet roll or kitchen roll

And mix together

Try experimenting with both types of blood, making cuts on your hands or arms. Use a black eyeshadow and a very thin, damp brush to draw your cut first, then apply your blood. Take a picture and send over your results to stevie.nelson@burycollege.ac.uk



You Tube Links

Click on the links below for Inspiration:

Powdah

<https://www.youtube.com/watch?v=yJmlhQpCQeM>

Stuart Bray

https://www.youtube.com/watch?v=o_D9lt6Phww



Finding Inspiration

As make-up artists we are always looking for ideas to inspire our next design. You are about to become a part of the Make-Up artist community here at Bury College and we want you to start thinking about the kind of Make-Up artist you want to be. Over the summer we recommend that you follow these amazing artists on Instagram, watch their tutorials and practise their designs for yourself.

@jamesmolloymakeupartist

@thealexbox

@patmcgrathreal

@lanslondon

@karlapowellmua

@issamayaffrench

@scottybekismfx

@stuartbray73

@illuminarty

@the_wigs_and_makeup_manager

@nrgorton

@Nikki_makeup

@nikkietutorials

Programmes to Watch

The Media Make-up industry is bigger now than ever before.

Catch up on these incredible TV series to give you an insight into what you will be learning over the next few years.

- Glow Up: Britain's Next Make-Up Star – Available to watch on BBC I-Player
- Skin Wars – Available on Netflix
- Ru Pauls Drag Race – Available on Netflix